

## Han K 8/0 Pos. M Insert 100 Amp. 10-25mm

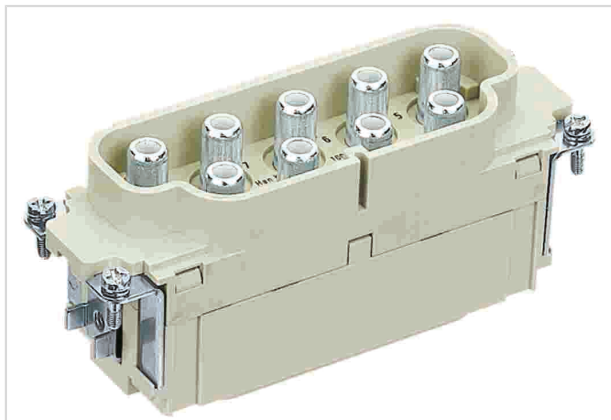


Image is for illustration purposes only. Please refer to product description.

Part number	09 38 008 2653
Specification	Han K 8/0 Pos. M Insert 100 Amp. 10-25mm
HARTING eCatalogue	<a href="https://b2b.harting.com/09380082653">https://b2b.harting.com/09380082653</a>

### Identification

Category	Inserts
Series	Han-Com®
Identification	Han® K 8/0

### Version

Termination method	Axial screw termination
Gender	Male
Size	24 B
Number of contacts	8
PE contact	Yes

### Technical characteristics

Conductor cross-section	10 ... 25 mm <sup>2</sup>
Wire outer diameter	≤11.4 mm
Rated current	100 A
Rated voltage	690 V
Rated impulse voltage	8 kV
Pollution degree	3
Rated current acc. to UL	82 A
Rated voltage acc. to UL	600 V
Rated current acc. to CSA	100 A
Rated voltage acc. to CSA	600 V
Insulation resistance	>10 <sup>10</sup> Ω



Pushing Performance

## Technical characteristics

Contact resistance	≤0.5 mΩ
Stripping length	13 ... 14 mm
Tightening torque	6 Nm @ 10 mm <sup>2</sup> 6 Nm @ 16 mm <sup>2</sup> 7 Nm @ 25 mm <sup>2</sup>
Limiting temperature	-40 ... +125 °C
Mating cycles	≥500

## Material properties

Material (insert)	Polycarbonate (PC)
Colour (insert)	RAL 7032 (pebble grey)
Material (contacts)	Copper alloy
Surface (contacts)	Silver plated
Material flammability class acc. to UL 94	V-0
RoHS	compliant with exemption
RoHS exemptions	6(c): Copper alloy containing up to 4 % lead by weight
ELV status	compliant with exemption
China RoHS	50
REACH Annex XVII substances	No
REACH ANNEX XIV substances	No
REACH SVHC substances	Yes
REACH SVHC substances	Lead
ECHA SCIP number	5dbb3851-b94e-4e88-97a1-571845975242

## Specifications and approvals

Specifications	EN 60664-1 IEC 61984
Approvals	DNV GL
UL / CSA	UL 1977 ECBT2.E235076 CSA-C22.2 No. 182.3 ECBT8.E235076

## Commercial data

Packaging size	1
Net weight	304.75 g
Country of origin	Germany



Pushing Performance

## Commercial data

European customs tariff number 85366990

eCl@ss 27440205 Contact insert for industrial connectors