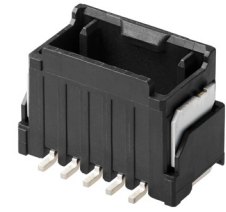


# Micro-One Wire-to-Board Connector with Integrated ISL

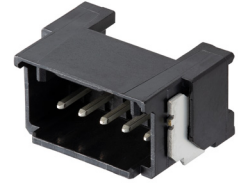


Compact Micro-One Wire-to-Board Connector with integrated ISL ensures proper terminal insertion and prevents accidental back-outs to achieve a secure electrical contact and improved mating retention in high-vibration applications

## Features and Advantages



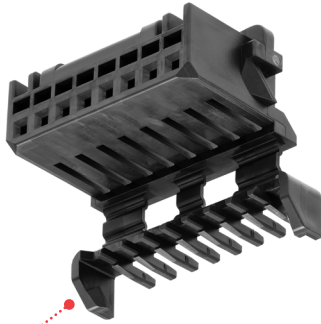
Micro-One Connector, Vertical Version



Micro-One Connector, Right-Angle Version



Micro-One Receptacle housing with integrated ISL



Receptacle Housing

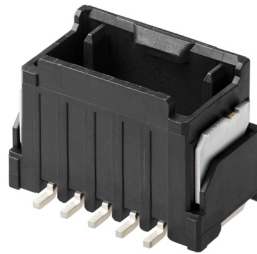
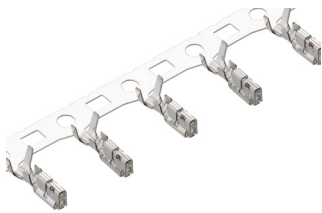
**Independent secondary lock (ISL)**  
Detects incomplete terminal insertion

**2.00mm pitch low-profile design**  
Reduces weight and saves space

**UL/CSA certified connectors**  
Ensures reliability

Crimp Terminal

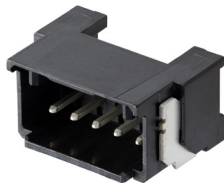
**Compatible with existing MicroClasp Terminals**  
56134-9001 for AWG22-24  
56134-9002 for AWG26-28



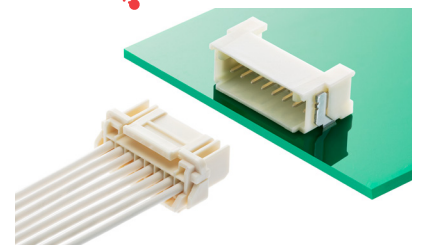
Vertical Header



**2- to 8- circuit vertical and right-angle header assembly**  
Offers design flexibility



Right-Angle Header



Right-Angle Header

# Micro-One Wire-to-Board Connector with Integrated ISL

**molex**

## Market and Applications

### Consumer

- Refrigerators
- Air conditioners
- Hot water gas heaters

### Industrial

- Power tools
- Test equipment
- Robots
- Factory automation
- Drones
- Vending machines



Vending Machine



White Goods



Drones

## Specifications\*

### REFERENCE INFORMATION

- Packaging: Embossed
- UL Certified: Yes
- CSA Certified: Yes
- Designed In: Millimeters
- RoHS: Yes
- Halogen Free: Yes

### ELECTRICAL

- Voltage (max.): 250V
- Current (max.): 4.0A (2 circuit, 22 AWG)

### MECHANICAL

- Durability (min.): 30 cycles

### PHYSICAL

- Housing Color: Natural or Black
- Contact: Copper Alloy
- Plating:
  - Terminal Pin — Tin-Bismuth over Nickel
  - Crimp Terminal — Tin
- Wire Outer Diameter: 0.88 to 1.60mm (UL1061/UL1007)
- Wire Size: 22 to 28 AWG
- Operating Temperature: -40 to +105°C

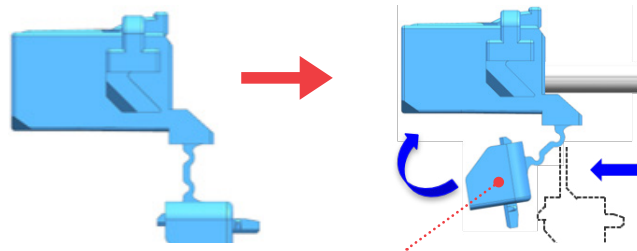
\*Refer to product specifications (2059790000-PS) for other electrical specifications

## RECEPTACLE ISL FUNCTION

As shipped

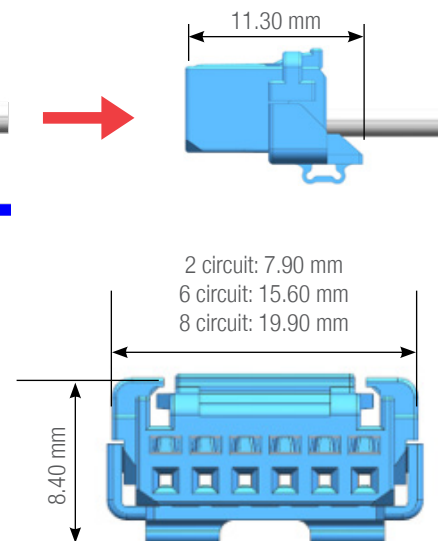


After terminal insertion



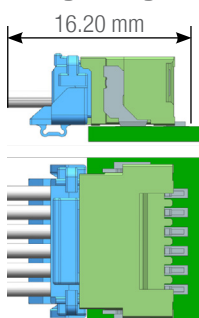
Mating by deforming the ISL part

After ISL closed

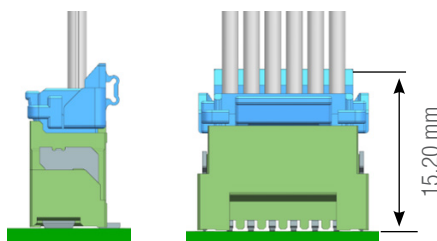


## MATED VIEW

Right Angle



Vertical



# Micro-One Wire-to-Board Connector with Integrated ISL



## Current Derating Reference Information

AWG#	Amps (A)		
	2-Circuit	4-Circuit	8-Circuit
22	4.0	3.5	3.0
24			
26	3.5	3.0	2.5
28	3.0	2.5	2.0

## Ordering Information

Series No.	Description	Circuits / Wire size (AWG)	Rows	Color		
205971002*	Vertical header	2	Single	Black		
205971003*		3				
205971004*		4				
205971005*		5				
205971006*		6				
205971007*		7				
205971008*		8				
2059720021		Right-angle header			2	
2059720031	3					
2059720041	4					
2059720051	5					
2059720061	6					
2059720071	7					
2059720081	8					
2059792021	Receptacle housing				2	
2059792031		3				
2059792041		4				
2059792051		5				
2059792061		6				
2059792071		7				
2059792081		8				
561349001		Crimp terminal			22 to 24	
561349002	26 to 28					

\* 1= With cover tape 3= Without cover tape

[www.molex.com/link/micro-one.html](http://www.molex.com/link/micro-one.html)

Molex is a registered trademark of Molex, LLC in the United States of America and may be registered in other countries; all other trademarks listed herein belong to their respective owners.