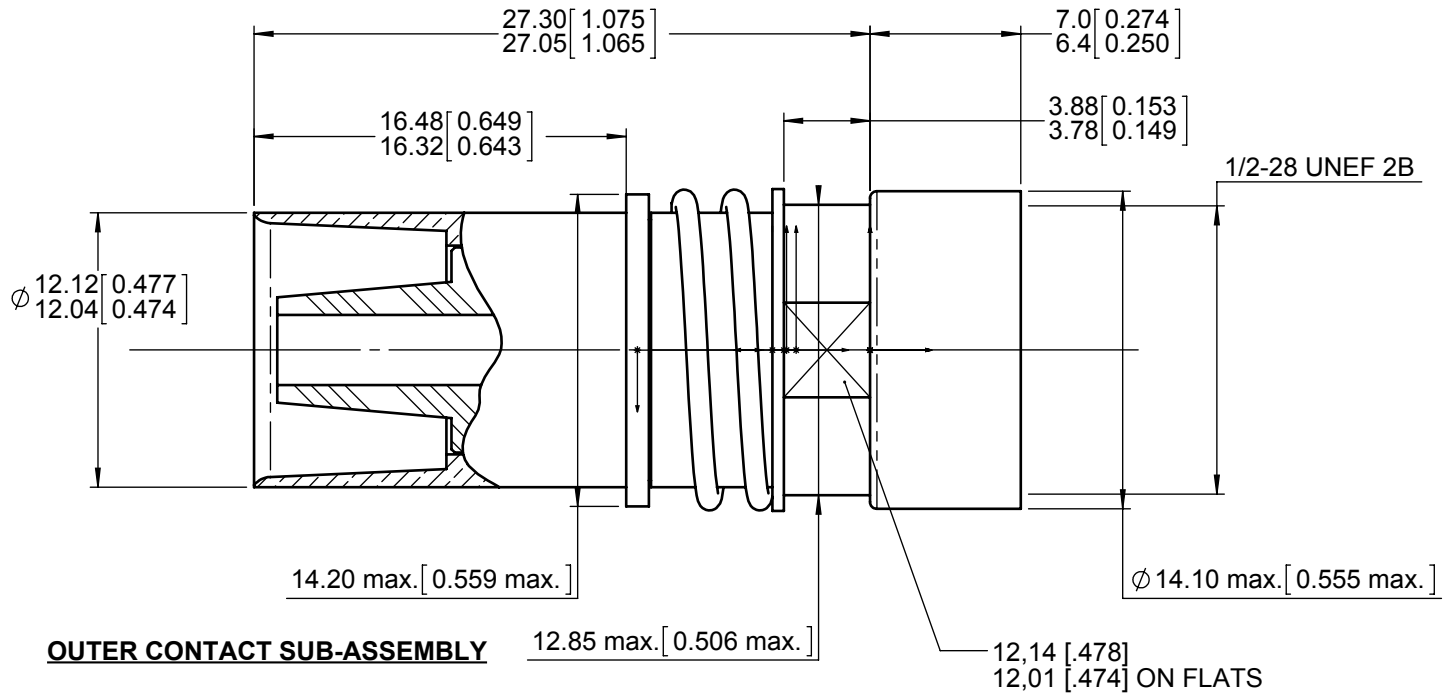


Series  
NSX

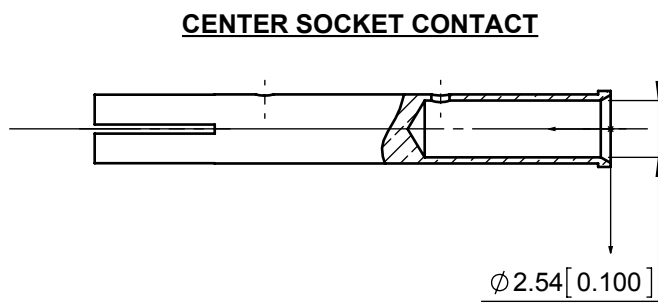
T-CAS - SIZE 1 RF CONTACT  
RG 214 AND SURPRENANT BA 6903 A CABLE  
CRIMP TERMINAISON

Issue:  
Mar. 13, 2017

Page  
1/1

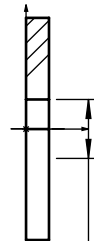


**OUTER CONTACT SUB-ASSEMBLY**



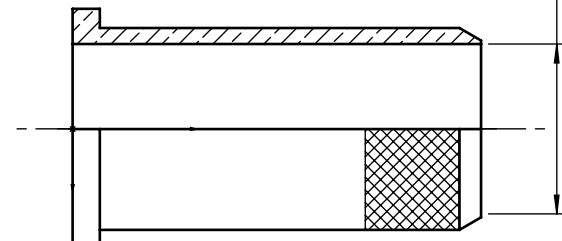
**CENTER SOCKET CONTACT**

**DIELECTRIC WASHER**

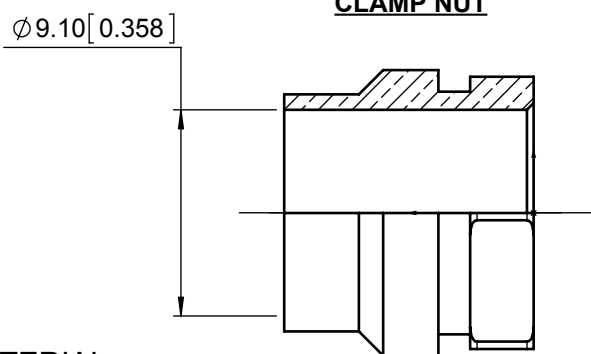


$\phi$  2.60 [0.102]

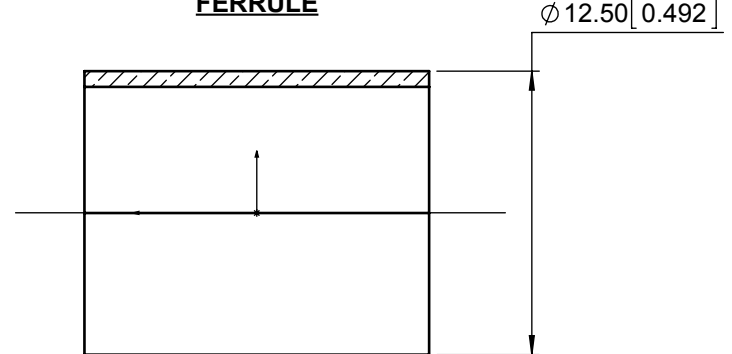
**CRIMP SLEEVE**



**CLAMP NUT**



**FERRULE**



**MATERIAL :**

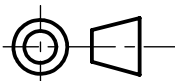
- OUTER CONTACT AND CENTER CONTACT BODY : BERYLLIUM COPPER PER ASTM-B-196
- DIELECTRIC AND DIELECTRIC WASHER : PTFE PER ASTM D 1710 OR EQUIVALENT
- CRIMP SLEEVE, FERRULE AND CLAMP NUT : BRASS PER ASTM B 16 OR ASTM B 453 OR EN 12164
- SPRING, C'CLIP AND WASHER : STAINLESS STEEL PER SAE AMS 5688

**FINISH :**

- OUTER CONTACT BODY, CRIMP SLEEVE, CENTER CONTACT BODY, CLAMP NUT AND FERRULE : PLATING .00005 INCH OF GOLD PER MIL-DTL-45204 OVER NICKEL PER AMS 2403
- WASHER : PASSIVATED
- C'CLIP : NICKEL PROTECTED

WIRING INSTRUCTIONS: RP 6176

DIMENSIONS : mm (inch are given for information only)



Estimated weight : 24 g

This document contains proprietary information and such information shall not be disclosed to any third party for any purpose whatsoever or used for manufacturing purposes without prior written agreement from RADIALL. This information is given as an indication. In the continual goal to improve our products, we reserve the right to make any modifications judged necessary.

4112\_9311

|   |             |                                       |          |          |
|---|-------------|---------------------------------------|----------|----------|
| <b>CREATION</b><br><br><b>PEN:</b><br><br><b>NOM:</b> FALETTI<br><b>DATE:</b> May 01, 1990<br><b>APPR.:</b> CARTESE |             |                                       |          |          |
|   | Mar. 13, 17 | Updated flats dimension per ARINC 600 | Pécault  | Legendre |
|   | Dec. 09, 96 | Redrawn                               | Valgresy | /        |
|   | Issue       | Revisions                             | Name     | Approved |
|   |             |                                       |          |          |