

Coaxial 2-Way-Splitter

Splitting ratio: 1 : 0.5 : 0.5

Connectors:

Input: 7-16 plug (50 Ohms)
 Outputs: 7-16 socket (50 Ohms)

Frequency range:

870 – 960 MHz (GSM 900)

Output difference: ≤ 0.1 dB

Residual attenuation: ≤ 0.05 dB

Insertion loss: ≤ 3.2 dB

VSWR: ≤ 1.10 (Port 1)

Power rating: 800 W CW

IM – value:

3rd order at 2 x 20 W ≤ -150 dBc | typical: ≤ -160 dBc

Degree of protection: IP 65

Operating temperature: -40 to +55°C

Wall / Mast mounting: part of delivery

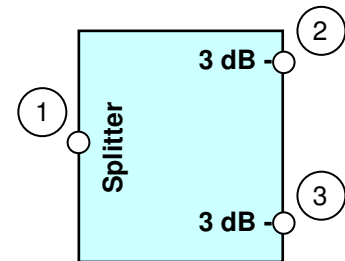
Weight: 0.635 kg

Appendix:

Dimensions
 Measurements for VSWR
 Insertion loss

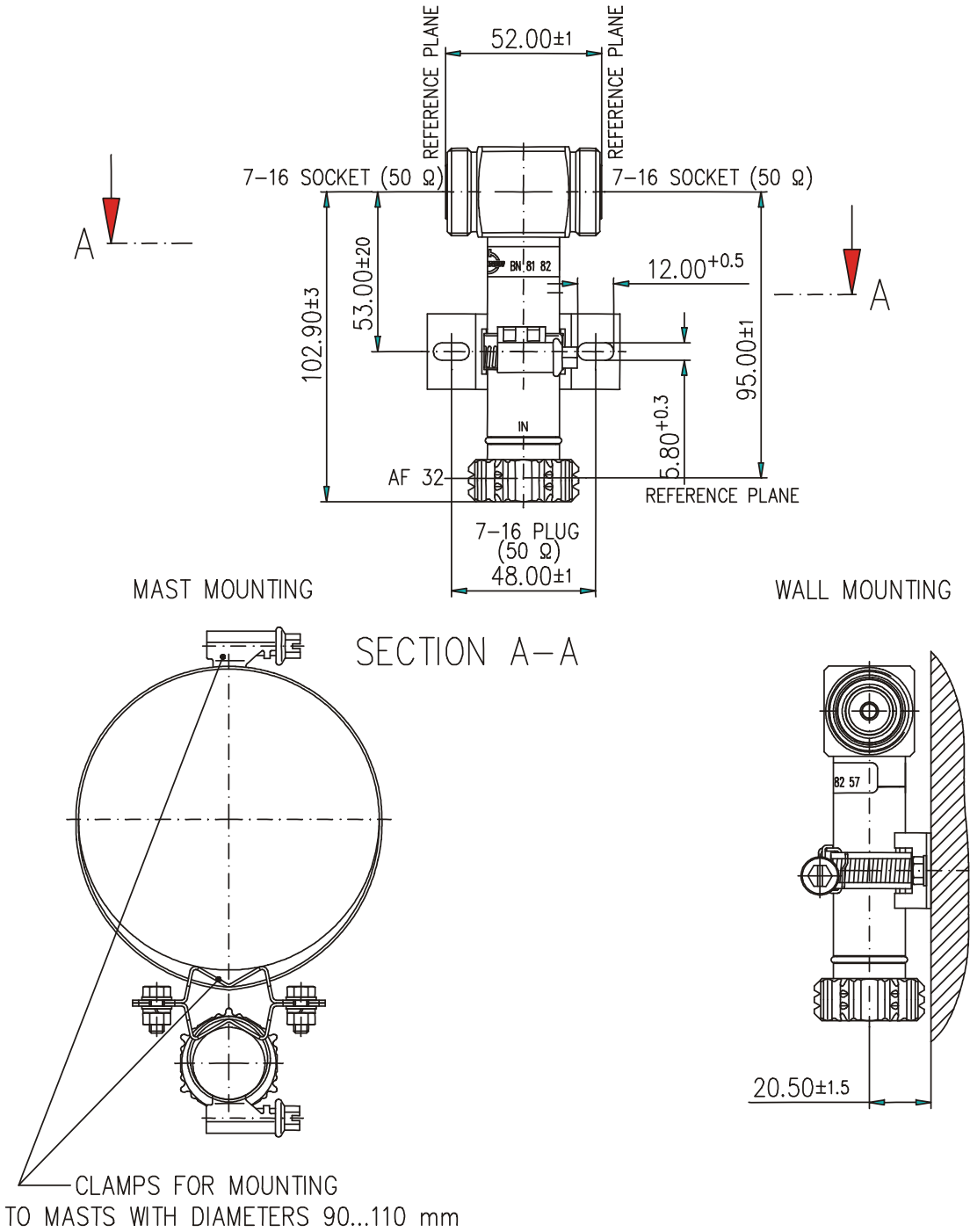


not binding



block diagram

Dimensions:



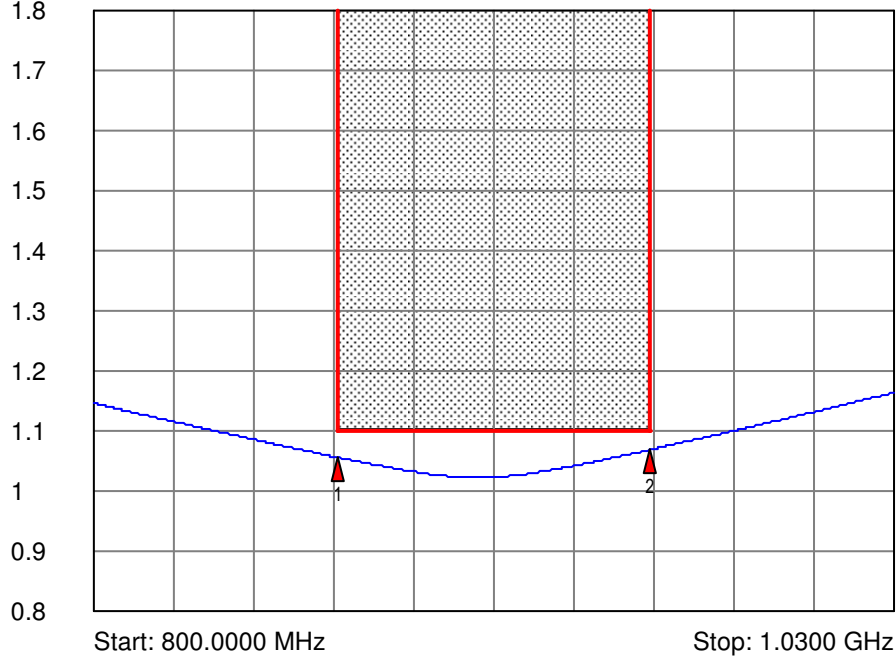
CLAMPS FOR MOUNTING TO MASTS WITH DIAMETERS 90...110 mm

CLAMPS FOR OTHER MAST DIAMETERS AVAILABLE ON REQUEST

CONSTRUCTIONAL MODIFICATIONS RESERVED

VSWR:

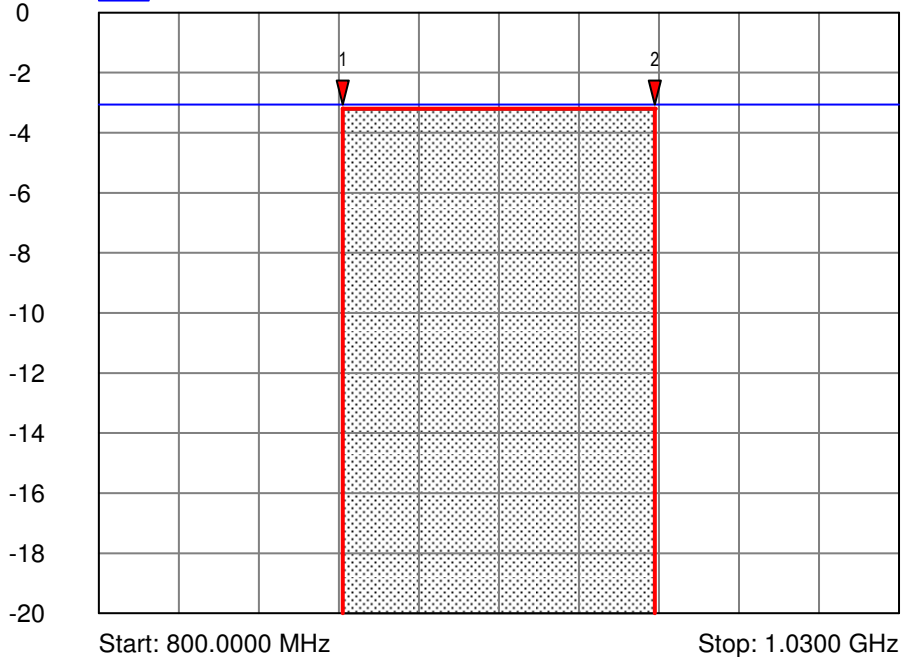
Port 1
VSWR S11



- 1 S11
▼ 870.0000 MHz
1.0561 VSWR
- 2 S11
▼ 960.0000 MHz
1.0691 VSWR

Insertion loss:

Port 1 to Port 2, 3
dB S21



- 1 S21
▼ 870.0000 MHz
-3.0563 dB
- 2 S21
▼ 960.0000 MHz
-3.0611 dB