

Bandpass Filter

BPF-A400+

50Ω 390 to 410 MHz

Maximum Ratings

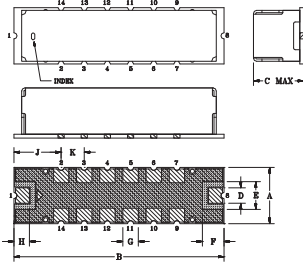
Operating Temperature	-40°C to 85°C
Storage Temperature	-55°C to 100°C
RF Power Input*	0.5W at 25°C

*Passband rating, derate linearly to 0.25W at 100°C ambient. Permanent damage may occur if any of these limits are exceeded.

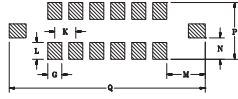
Pin Connections

RF IN	1
RF OUT	8
GROUND	2,3,4,5,6,7,9,10,11,12,13,14

Outline Drawing



PCB Land Pattern



Suggested Layout
Tolerance to be within ±.002

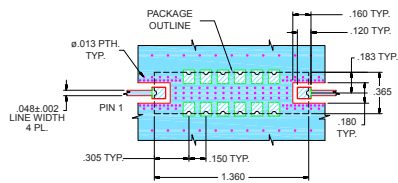
METALLIZATION SOLDER RESIST

Outline Dimensions (inch/mm)

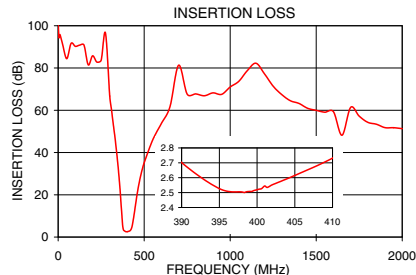
	A	B	C	D	E	F	G	H
	.365	1.360	.35	.100	.180	.140	.100	.100
	9.27	34.54	8.89	2.54	4.57	3.56	2.54	2.54
	J	K	L	M	N	P	Q	Wt.
	.305	.150	.120	.275	.152	.405	1.400	grams
	7.75	3.81	3.05	6.99	3.86	10.29	35.56	4.0

Note: Please refer to case style drawing for details

Demo Board MCL P/N: TB-363+ Suggested PCB Layout (PL-227)



NOTES: 1. TRACE WIDTH IS SHOWN FOR FR4 WITH DIELECTRIC THICKNESS: .025" ± .002; COPPER: 1/2 OZ EACH SIDE. FOR OTHER MATERIALS TRACE WIDTH MAY NEED TO BE MODIFIED.
2. BOTTOM SIDE OF THE PCB IS CONTINUOUS GROUND PLANE.
DENOTES PCB COPPER LAYOUT WITH SMOBC (SOLDER MASK OVER BARE COPPER)
DENOTES COPPER LAND PATTERN FREE OF SOLDER MASK



Features

- Linear phase, up to ±6 deg typ @ Fc ± 15 MHz
- High rejection
- Shielded case
- Aqueous washable

Applications

- Military communications
- Harmonic rejection
- Transmitters/receivers



Generic photo used for illustration purposes only

CASE STYLE: HQ1157

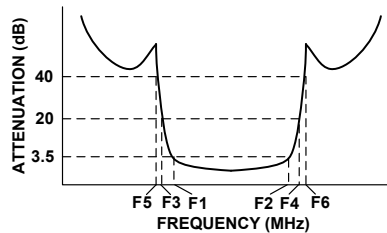
+RoHS Compliant

The +Suffix identifies RoHS Compliance. See our web site for RoHS Compliance methodologies and qualifications

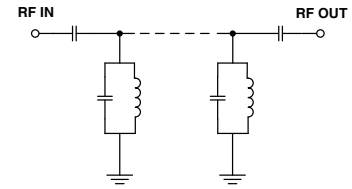
Bandpass Filter Electrical Specifications (T_{AMB} = 25°C)

CENTER FREQ. (MHz)	PASSBAND (MHz) (Loss < 3.5dB)	STOPBANDS (MHz)				MAXIMUM DEVIATION FROM LINEAR PHASE (deg.) Fc ± 15MHz	VSWR (:1)		
		Loss > 20dB		Loss > 40dB			Passband		Stopband
Fc	F1 - F2	F3	F4	F5	F6		Typ.	Max.	Typ.
400	390 - 410	350	490	320	600-2000	±13	1.5	1.9	20

Typical Frequency Response

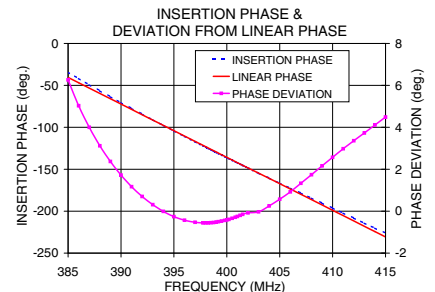
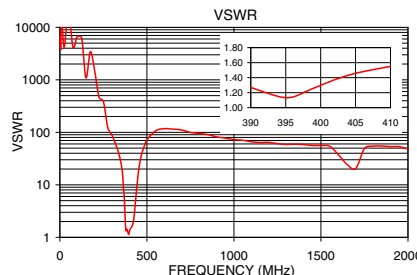


Functional Schematic



Typical Performance Data at 25°C

Frequency (MHz)	Insertion Loss (dB)	VSWR (:1)	Frequency (MHz)	Deviation from Linear Phase (deg.)
0.5	100.93	6634.72	385.0	6.26
320	53.72	59.78	386.0	5.03
350	31.89	27.00	388.0	3.12
360	22.26	16.63	390.0	1.72
370	10.66	5.88	392.0	0.70
375	5.46	2.34	394.0	-0.01
390	2.70	1.27	396.0	-0.43
395	2.53	1.13	398.0	-0.56
400	2.52	1.30	400.0	-0.42
405	2.62	1.46	401.0	-0.25
410	2.73	1.55	402.0	-0.08
430	5.17	3.22	404.0	0.25
440	9.94	7.75	406.0	0.92
460	20.71	26.92	408.0	1.74
490	32.37	60.49	410.0	2.57
600	53.76	117.41	412.0	3.36
1000	71.03	72.46	414.0	4.11
2000	51.29	47.99	415.0	4.49



Notes

- Performance and quality attributes and conditions not expressly stated in this specification document are intended to be excluded and do not form a part of this specification document.
- Electrical specifications and performance data contained in this specification document are based on Mini-Circuit's applicable established test performance criteria and measurement instructions.
- The parts covered by this specification document are subject to Mini-Circuit's standard limited warranty and terms and conditions (collectively, "Standard Terms"); Purchasers of this part are entitled to the rights and benefits contained therein. For a full statement of the Standard Terms and the exclusive rights and remedies thereunder, please visit Mini-Circuit's website at www.minicircuits.com/MCLStore/terms.jsp

