



Summary

[Request a quote](#)

[Catalog](#)

Series S - Indoor Stepped Insert

Technical details

Form & Material

Shell style / Model id	GCA - Earthing washer
Housing material	Aluminum alloy (anodized) shell and collet nut, nickel plated [SAE AMS QQ N 290] brass latch sleeve and mid pieces
Keying	No keying
Weight	0.31 g

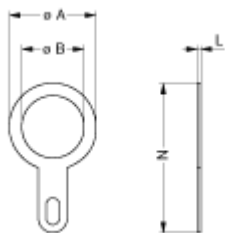
Environment

Technical domain	Audio Video, Energy and Industrial, Semiconductor, Test and Measurement
Environmental protection	No IP rating
Minimal temperature	-55°C / +250°C
Climatical Category	50/175/21
Humidity (max)	<=95% [at 60 deg C /140 F]
Shielding (min)	75 dB (10 MHz)
Shielding (min)	40 dB (1 GHz)
Shock Resistance	100 g [6 ms]
Vibration	15 g [10 Hz - 2000 Hz]

https://www.lemo.com/int_en/solutions/originals/s-indoor-stepped-insert/gca-0s-255-lt.html

LEMO products and services are provided "as is". LEMO makes no warranties or representations with regard to LEMO product & services or use of them, express, implied or statutory, including for accuracy, completeness, or security. The user is fully responsible for his products and applications using LEMO components.

Drawings



No keying

Dimensions

	A	B	L	N
mm.	13	9.1	0.4	22
in.	0.51	0.36	0.02	0.87

Recommended By Lemo

Accessories

Tools

https://www.lemo.com/int_en/solutions/originals/s-indoor-stepped-insert/gca-0s-255-lt.html

LEMO products and services are provided "as is". LEMO makes no warranties or representations with regard to LEMO product & services or use of them, express, implied or statutory, including for accuracy, completeness, or security. The user is fully responsible for his products and applications using LEMO components.