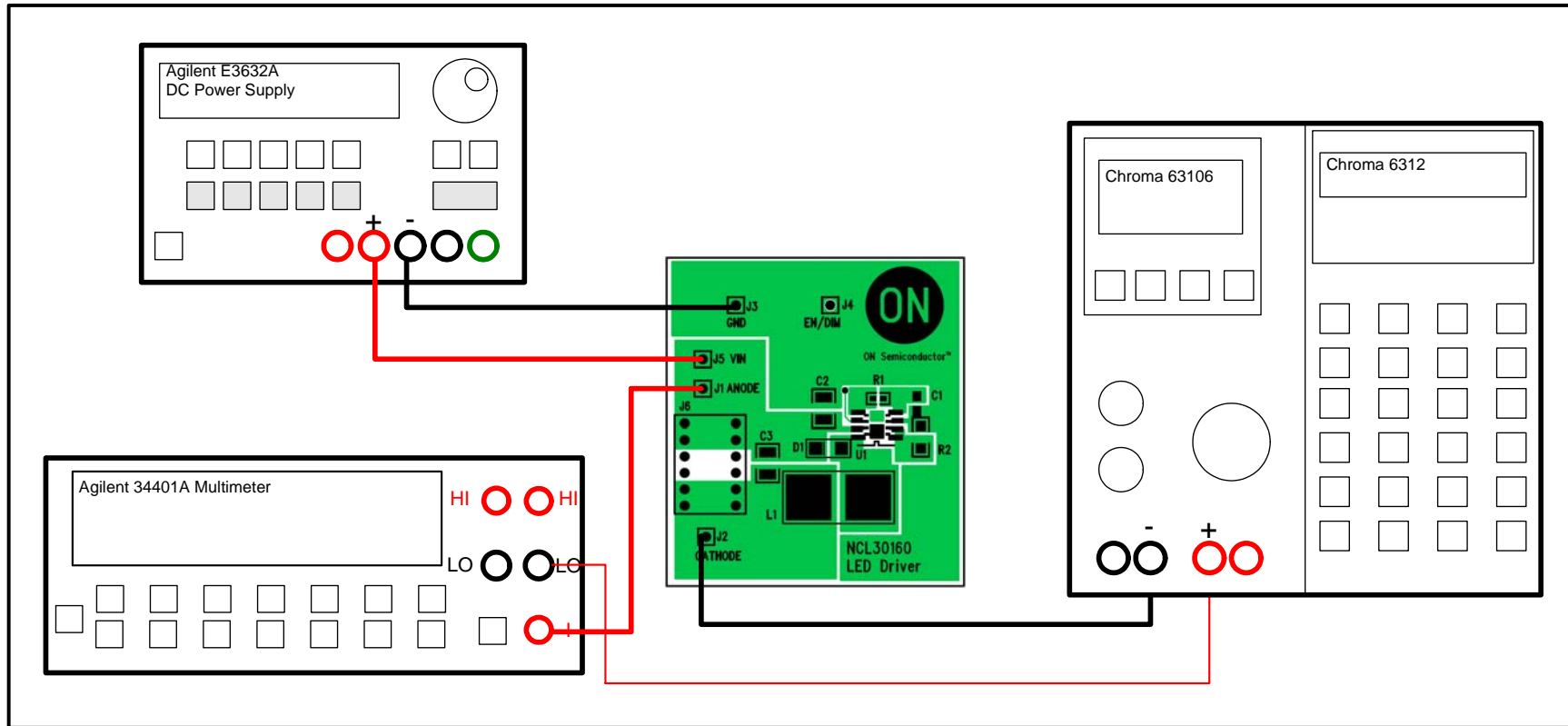


Test Procedure for the NC30160GEVB

ON Semiconductor®



03/7/2012



05/15/2012

Table 1: Required Equipment

Agilent E3632A DC Power Supply	Agilent 34401A Multimeter	Three Red Test Leads
Two Black Test Leads	Chroma 6312 Electronic Load Mainframe	Chroma 63106 Electronic Load
One NCL30160GEVB Evaluation Board		

Test Procedure:

- 1. Connect the test setup as shown above.**
- 2. Apply an input voltage, $V_{IN} = 12V$ across VIN and GND.**
- 3. Apply 10 Ω loading from the electronic load after powering up the demo board.**
- 4. Check I_{OUT} .**
- 5. Change the V_{IN} voltage to $V_{IN} = 24V$.**
- 6. Check I_{OUT} .**

Table 2: Desired Results

For $V_{IN} = 12V$, $I_{OUT} = 280\text{ mA}$

For $V_{IN} = 24V$, $I_{OUT} = 277\text{ mA}$