

Customer Information Sheet

DRAWING No.: P25-XX26

SHEET 2 OF 2

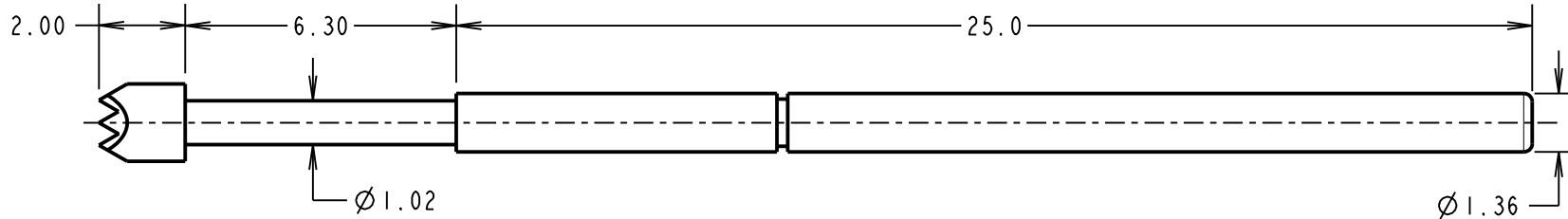
IF IN DOUBT - ASK

©

NOT TO SCALE

THIRD ANGLE PROJECTION

ALL DIMENSIONS IN mm



ORDER CODE:
P25-XX26
PROBE HEAD: _____
VARIANT (SEE BELOW)

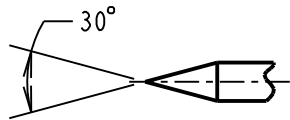
NOTES:

1. TO BE USED WITH SLEEVE S25-XX6.
2. SUITABLE FOR A MINIMUM DISTANCE BETWEEN CENTRES OF 2.54mm.

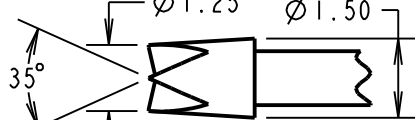
SPECIFICATIONS:

MATERIAL:
PLUNGER:
 P25-3226, P25-1726, P25-4026 = BERYLLIUM COPPER
 P25-0126 = HIGH CARBON STEEL
BARREL:
 P25-3226, P25-1726, P25-4026 = BRASS
 P25-0126 = PHOSPHOR BRONZE
 SPRING = STAINLESS STEEL
FINISH:
 PLUNGER, BARREL = GOLD OVER NICKEL
 SPRING:
 P25-3226, P25-1726, P25-4026 = UNPLATED
 P25-0126 = GOLD OVER NICKEL
ELECTRICAL:
 CURRENT RATING = 3A MAX
 CONTACT RESISTANCE = 50mΩ MAX
MECHANICAL:
 DURABILITY = 100,000 CYCLES MIN
 FULL TRAVEL = 6.30mm
 SPRING FORCES:
 AT FULL TRAVEL = 2.45N ±0.50N (250g ±20%)
 AT 2/3 TRAVEL = 1.67N ±0.34N (170g ±20%)
ENVIRONMENTAL:
 TEMPERATURE RANGE = -40°C TO +180°C

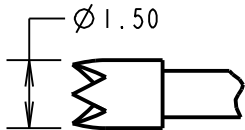
PROBE HEAD VARIANTS



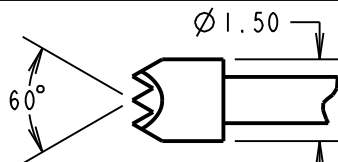
SPEAR HEAD
P25-0126



CROWN HEAD
P25-3226



TULIP HEAD
P25-1726



SERRATED HEAD
P25-4026

SB	6	08.11.17	20842
NAME	ISS.	DATE	C/NOTE
APPROVED: S.BENNETT			
CHECKED: M.PLESTED			
DRAWN: W.J.BOURNE			
CUSTOMER REF.:			
ASSEMBLY DRG:			

HARWIN

www.harwin.com
technical@harwin.com

THIS DRAWING AND ANY INFORMATION OR DESCRIPTIVE MATTER SET OUT HEREON ARE CONFIDENTIAL AND COPYRIGHT PROPERTY OF THE HARWIN GROUP AND MUST NOT BE DISCLOSED, LOANED, COPIED OR USED FOR MANUFACTURING, TENDERING OR FOR ANY OTHER PURPOSE WITHOUT THEIR WRITTEN PERMISSION.

TOLERANCES

X. = ±1mm
 X.X = ±0.50mm
 X.XX = ±0.10mm
 X.XXX = ±0.01mm
 ANGLES = ±5°
 UNLESS STATED

MATERIAL:

SEE ABOVE

FINISH: SEE ABOVE

S/AREA:

mm²

TITLE:

2.54mm MIN. CENTRE
TWO-PIECE SPRING PROBE

DRAWING NUMBER:

P25-XX26

SHT
2 OF 2