

Three channel power units

P703B series

SPECIFICATIONS

| | P703B | P703B-6 | P703BT |
|---|------------------------|---------------------|---|
| Input: | | | |
| Voltage to transducer | 27 VDC ¹ | 27 VDC ¹ | 27 VDC ¹ |
| Current to transducer | 2.4 mA DC, ±20% | 6.0 mA DC, ±20% | 2.4 mA DC, ±10% |
| Maximum input voltage | 10 V rms | 10 V rms | 10 V rms |
| Output impedance (sensor attached to input) | same as transducer | | |
| Recommended load impedance | >100 kΩ | >100 kΩ | >100 kΩ |
| Decoupling capacitor (internal) | 22 μF, 35 VDC | 22 μF, 35 VDC | 22 μF, 35 VDC |
| Gain | 1:1 with DC decoupling | | |
| Frequency response | same as transducer | | |
| Channels | 3 | 3 | 3 |
| Channel separation | >80 dB | >80 dB | >60 dB |
| LED lights | >18 VDC | | |
| Battery life | >40 hours | >16 hours | >40 hours |
| Batteries | 9V alkaline (3) | | |
| External power | 24 to 30 VDC | | |
| Temperature range | 0° to +55°C | | |
| Size (W x H x D) | 3 x 2.4 x 4 inches | | |
| Weight | 0.84 lb | 0.84 lb | 1.0 lb |
| Connectors: | | | |
| Signal input | BNC | BNC | Bendix POC2A-8-4P |
| Signal output | BNC | BNC | BNC (front panel) |
| Pin out (P703BT only) | | | A: y axis B: x axis C: z axis D: common/return |



Key features

- Powers 3 separate sensors
- Can drive up to 50 ft. of cable
- Battery condition light
- Manufactured in an ISO 9001 facility

Notes: ¹ 25.2 VDC when using Ni-Cad batteries.

² For extended operation, the NC3 Ni-Cad battery kit should be used.

Accessories supplied: (3) 9V alkaline batteries

Accessories available: NC3 Ni-Cad battery kit; LA704B line adaptor (110V); LA704B-220 line adaptor (220V); BNC series adaptors

Models available

| | |
|---------|------------------------|
| P703B | standard model |
| P703B-6 | 6 mA constant current |
| P703BT | Bendix 4 pin connector |

See reverse for operating instructions.

Note: Due to continuous process improvement, specifications are subject to change without notice. This document is cleared for public release.

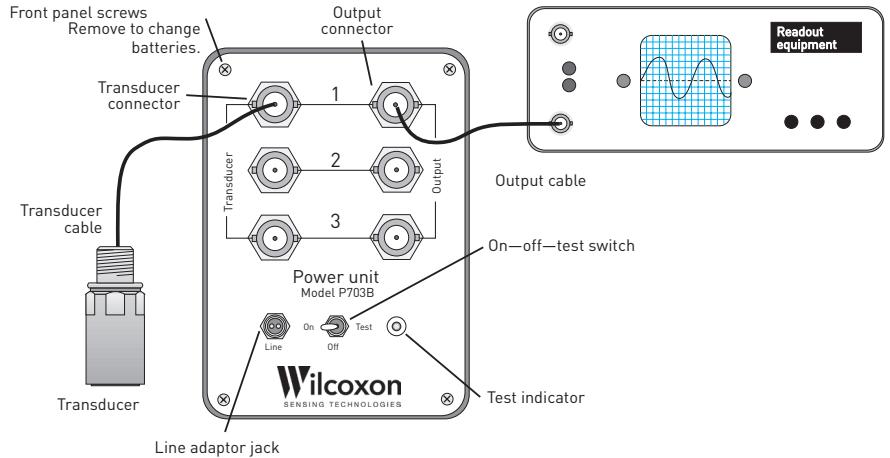
Three channel power units

P703B series

Operating instructions

1. To test batteries, press switch to RIGHT (momentary) position; LED should light.
2. OFF position is with switch in center.
3. To turn unit ON, press to LEFT.

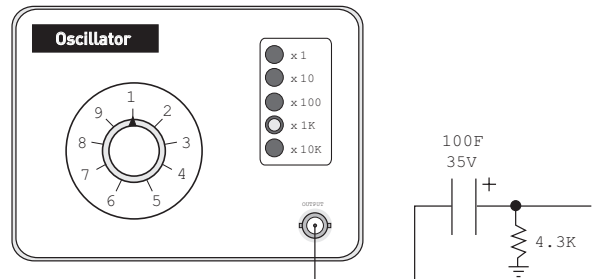
Use LA704B line adaptor to power unit from line voltage without batteries installed or to charge Ni-Cad batteries.



CAUTION: DO NOT ATTEMPT TO RECHARGE ALKALINES WITH THE LA704B. Alkaline batteries may EXPLODE or leak corrosive fluids.

Test for proper operation

- Use a digital multimeter to verify that the proper voltage and current are available at the transducer connector.
- Substitute an oscillator for the transducer.
- Follow the connection to the power unit as shown at right.
- The unit should have unity gain.



Note: Due to continuous process improvement, specifications are subject to change without notice. This document is cleared for public release.