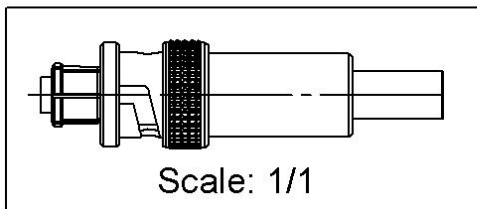
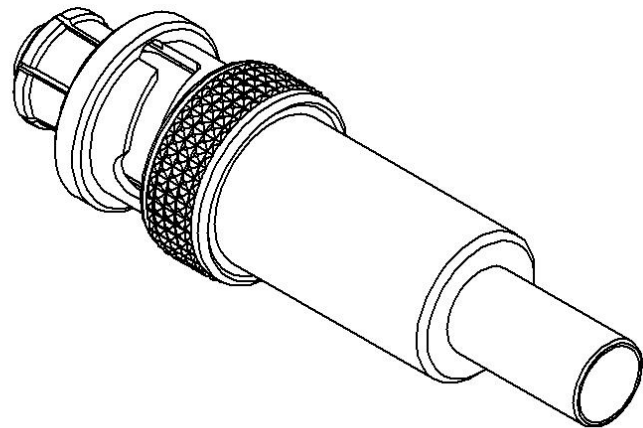
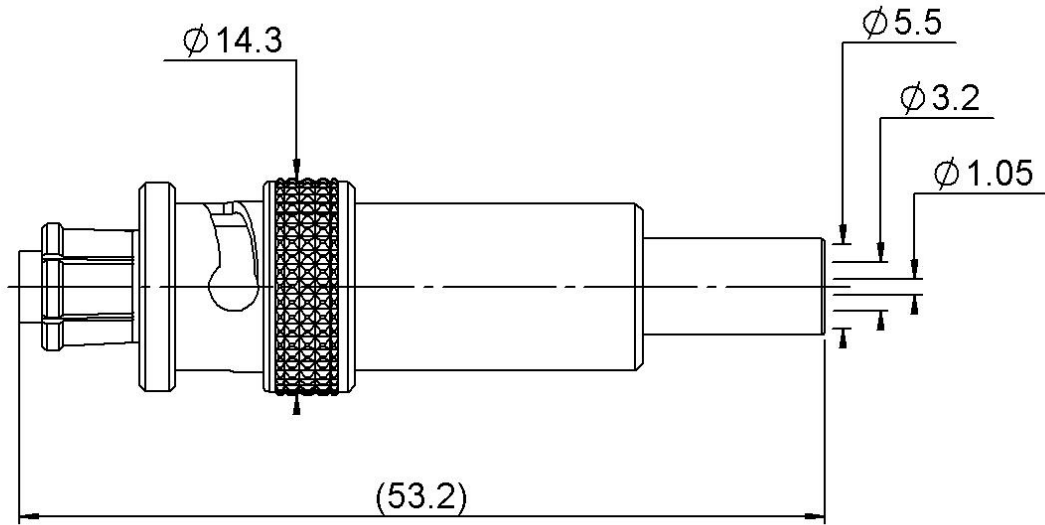


PAGE 1/3	ISSUE 08-09-22J	SERIES SHV	PART NUMBER R317072000
----------	--------------------	------------	------------------------



All dimensions are in mm. Tolerances according ISO 2768 m-H



COMPONENTS	MATERIALS	PLATING (μm)
Body	BRASS	NICKEL
Center contact	BERYLLIUM COPPER	GOLD OVER NICKEL
Outer contact	BERYLLIUM COPPER	NICKEL
Insulator	PTFE	
Gasket	SILICONE RUBBER	
Others parts	BRASS	NICKEL
-	-	-
-	-	-

PAGE 2/3	ISSUE 08-09-22J	SERIES SHV	PART NUMBER R317072000
-----------------	---------------------------	-------------------	-------------------------------

PACKAGING

Standard	Unit	Other
1		Contact us

ELECTRICAL CHARACTERISTICS

Impedance		50	Ω
Frequency		0-2	GHz
VSWR	***1.2	+	0,6000 x F(GHz) Maxi
Insertion loss		NA	√F(GHz) dB Maxi
RF leakage	- (NA	- F(GHz)) dB Maxi
Voltage rating		**	Veff Maxi
Dielectric withstanding voltage		*10000	Veff mini
Insulation resistance		5000	MΩ mini

MECHANICAL CHARACTERISTICS

Center contact retention			
Axial force – Mating End		27	N mini
Axial force – Opposite end		27	N mini
Torque		NA	N.cm mini
Recommended torque			
Mating		NA	N.cm
Panel nut		NA	N.cm
Clamp nut		NA	N.cm
A/F clamp nut		0,0000	mm
Mating life		500	Cycles mini
Nominal Weight (Add +15% for max weight)		21,0000	g

ENVIRONMENTAL

Operating temperature	-65/+165	°C
Hermetic seal	NA	Atm.cm3/s
Panel leakage	NA	

SPECIFICATION

CABLE ASSEMBLY

Stripping	a	b	c	d	e	f
mm	3,5000	6,5000	26,8000	0,0000	0,0000	0,0000
			0			

Assembly instruction:

Recommended cable(s)

RG 58
KX 15

Characteristics indicated on this data sheet are those that can be achieved with the highest performance cable. Intrinsic limitations of the cable may diminish the performance of the assembly

Cable retention

- pull off	180	N mini
- torque	NA	N.cm

TOOLING

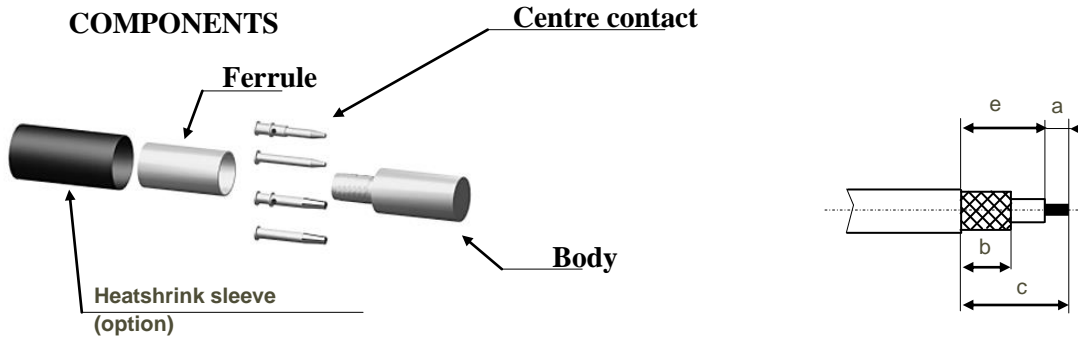
Part Number	Description	Other
R282223000	CRIMPING TOOL HEX 1.73-5.41-6.48	Hex 1.73(CC) Hex 5.4
R2822293000	PINCE SERT M 22520/5-01	
R282235011	MACH SERT. M22520/5-11	Hex 1.73 C.C // Hex 5.4

OTHER CHARACTERISTICS

- ** 6000 V eff (DC)**
- ** 3500 V rms (AC)**
- * 12000 V - Coupled Connector**
- *** From 0-1GHz**

PAGE 3/3	ISSUE 08-09-22J	SERIES SHV	PART NUMBER R317072000
----------	--------------------	------------	------------------------

COMPONENTS



1

Slide the heatshrink sleeve onto the cable (Option).
Slide the ferrule onto the cable.
Strip the cable.

4

Slide the cable into the body until it bottoms against the insulator.

2

Slide the centre contact on until it bottoms against the cable dielectric.
Crimp or solder the centre contact. (see connector TDS)
Clean solder area.

5

Slide the ferrule over the braid.
Crimp the ferrule with crimping tool (see connector TDS).

3

Fan the braid.

6

Cut the excess of braid if necessary.
Slide the sleeve over the ferrule and heatshrink it in place (Option).