

Surface Mount High Pass Filter

SCHF-27+

50Ω 27 to 1000 MHz

The Big Deal

- Low insertion loss
- High rejection
- Small size, 0.75 x 0.38 x 0.28"



CASE STYLE: YY161

Product Overview

SCHF-27+ is a 50Ω high pass filter fabricated using SMT technology. This SMT model offers lower insertion loss, good return loss, higher stopband rejection and a wider passband 27 to 1000 MHz. This filter is built with high Q capacitors and wire wound inductors for superior performance. It has repeatable performance across lots and consistent performance across temperature. The unit comes housed in a miniature plastic package measuring just 0.75 x 0.38 x 0.28", ideal for dense circuit board layouts.

Key Features

Feature	Advantages
Low insertion loss	Can be used in high performance applications.
Good rejection	This enables the filter to attenuate spurious signals and reject harmonics for broad frequency band.
Small size, 0.75" x 0.38" x 0.28"	Accommodates tight space requirements for dense PCB layouts.

Notes

- A. Performance and quality attributes and conditions not expressly stated in this specification document are intended to be excluded and do not form a part of this specification document.
B. Electrical specifications and performance data contained in this specification document are based on Mini-Circuit's applicable established test performance criteria and measurement instructions.
C. The parts covered by this specification document are subject to Mini-Circuits standard limited warranty and terms and conditions (collectively, "Standard Terms"); Purchasers of this part are entitled to the rights and benefits contained therein. For a full statement of the Standard Terms and the exclusive rights and remedies thereunder, please visit Mini-Circuits' website at www.minicircuits.com/MCLStore/terms.jsp



Surface Mount High Pass Filter

50Ω 27 to 1000 MHz

SCHF-27+



CASE STYLE: YY161

Features

- Low Insertion loss
- High Rejection
- Small size, 0.75 x 0.38 x 0.28"

Applications

- HF/VHF
- Lab use
- Receivers / transformer

Electrical Specifications at 25°C

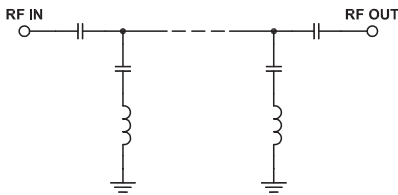
Parameter		F#	Frequency (MHz)	Min.	Typ.	Max.	Unit
Stop Band	Rejection Loss	DC-F1	DC-17	40	52	-	dB
		F1-F2	17-19	20	32	-	dB
	VSWR	DC-F1	DC-19	-	18	-	:1
Pass Band	Insertion Loss	F3-F4	27-1000	-	0.6	1.0	dB
	VSWR	F3-F4	27-1000	-	1.2	-	:1

Maximum Ratings

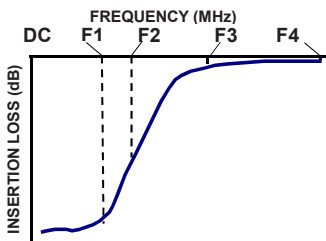
Operating Temperature	-40°C to 85°C
Storage Temperature	-55°C to 100°C
RF Power Input	5W Max. @ 25°C

Permanent damage may occur if any of these limits are exceeded.

Functional Schematic



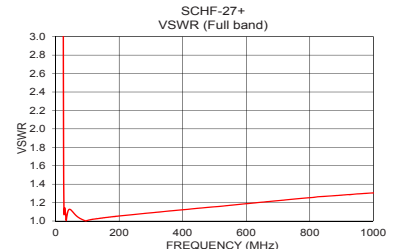
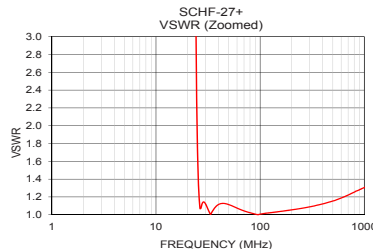
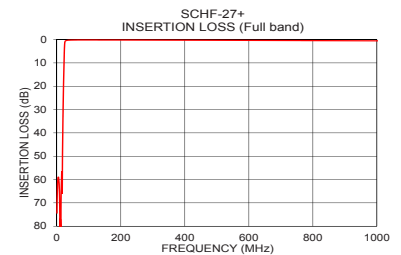
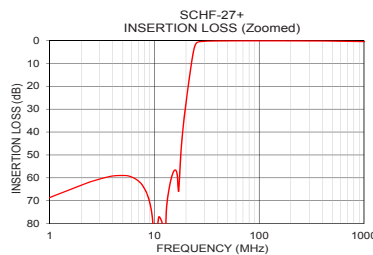
Typical Frequency Response



Typical Performance Data at 25°C

Frequency (MHz)	Insertion Loss (dB)	VSWR (:1)
1.0	68.60	5012.20
5.0	58.97	844.66
10.0	86.61	290.32
15.0	57.95	113.27
17.0	65.92	80.70
19.0	35.82	55.97
19.5	31.37	50.35
20.0	27.32	44.79
21.0	20.01	32.84
22.0	13.40	19.86
23.0	7.56	9.15
24.0	3.31	3.67
25.0	1.32	1.77
26.0	0.72	1.18
27.0	0.56	1.07
50.0	0.22	1.11
100.0	0.18	1.01
250.0	0.22	1.07
500.0	0.32	1.15
1000.0	0.53	1.31

+RoHS Compliant
The +Suffix identifies RoHS Compliance. See our web site for RoHS Compliance methodologies and qualifications



Notes

- Performance and quality attributes and conditions not expressly stated in this specification document are intended to be excluded and do not form a part of this specification document.
- Electrical specifications and performance data contained in this specification document are based on Mini-Circuits' applicable established test performance criteria and measurement instructions.
- The parts covered by this specification document are subject to Mini-Circuits standard limited warranty and terms and conditions (collectively, "Standard Terms"); Purchasers of this part are entitled to the rights and benefits contained therein. For a full statement of the Standard Terms and the exclusive rights and remedies thereunder, please visit Mini-Circuits' website at www.minicircuits.com/MCLStore/terms.jsp



www.minicircuits.com P.O. Box 350166, Brooklyn, NY 11235-0003 (718) 934-4500 sales@minicircuits.com

REV. A
M165986
SCHF-27+
EDU2767/1
URJ
180131
Page 2 of 3

