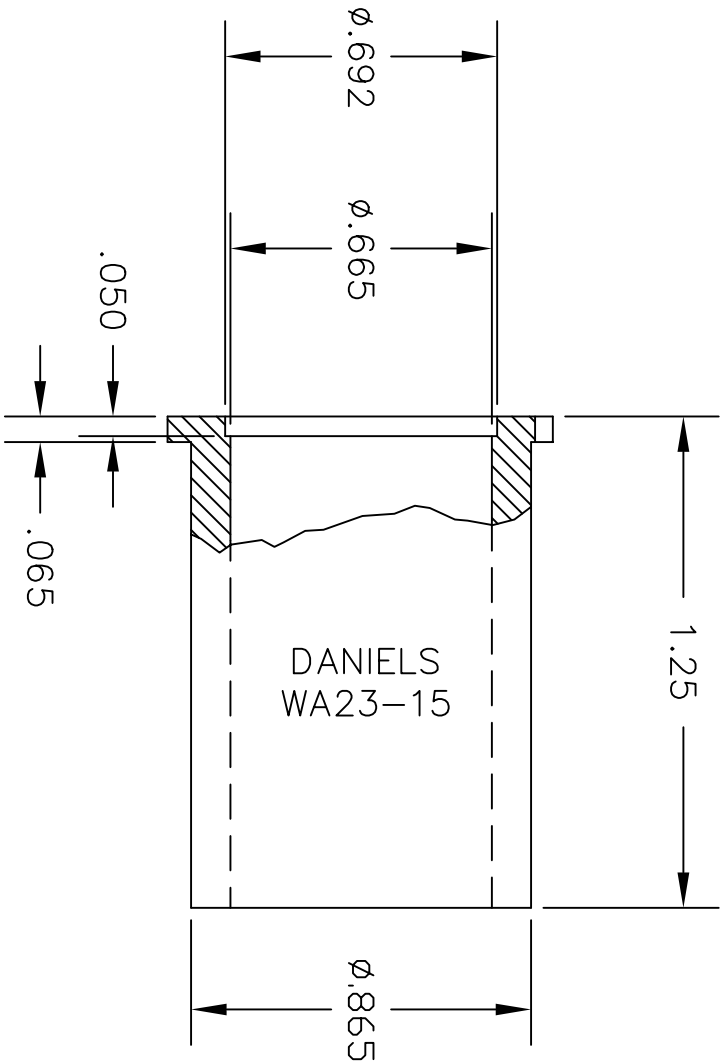
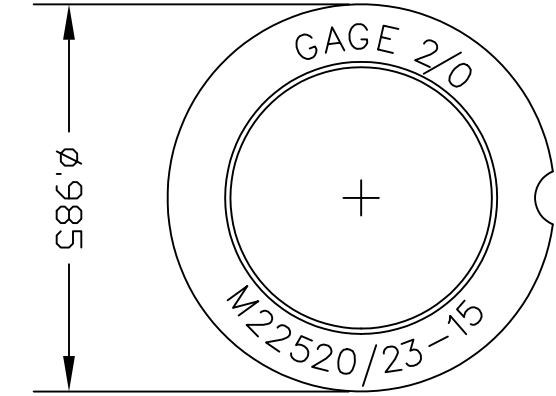


**UNCONTROLLED DOCUMENT
WILL NOT BE UPDATED**

REVISIONS		DESCRIPTION	BY DATE	APP'D DATE
REV. SYM.	E.C.O. NUMBER			
1		ORIGINAL RELEASE	JWJ 2/13/04	RRR 2/13/04



<p style="text-align: center;">RESTRICTED & CONFIDENTIAL</p> <p>CONFIDENTIAL PROPERTY OF DANIELS MANUFACTURING CORP. NOT TO BE DISCLOSED TO OTHERS, REPRODUCED OR USED FOR ANY OTHER PURPOSE, EXCEPT AS AUTHORIZED IN WRITING BY DANIELS MANUFACTURING. MUST BE RETURNED TO DANIELS MANUFACTURING CORP. ON COMPLETION OF ORDER OR OTHER PURPOSE FOR WHICH LENT.</p>		MATERIAL		HEAT TREAT		FINISH	
		ITEM		PART NO.		QTY.	
DRN.		DATE		TITLE		WHERE USED:	
J. JOYCE		2/13/04		LOCATOR ENVELOPE DRAWING		CAD P/N	
CHK'D. RRR		DATE 2/13/04		DANIELS MANUFACTURING CORP. ORLANDO, FLORIDA CAGE 11851		WA23-15-ENV	
APP'D.		DATE		DWC. NO.		SHEET OF	
APP'D.		DATE		WA23-15-ENV		1 1	
<p>NOTE: THIS DRAWING IS AN OUTLINE DRAWING OF THE RESPECTIVE DMC PART NUMBER INDICATED. ACTUAL DMC PART NUMBER IS DRAWING NUMBER WITHOUT THE "-ENV" SUFFIX.</p>							
<p>DO NOT SCALE DRAWING</p>							