

Han K 6/36 Pos. M Insert Crimp

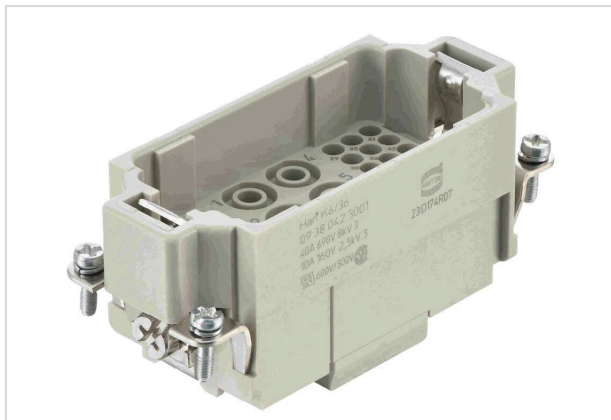


Image is for illustration purposes only. Please refer to product description.

Part number	09 38 042 3001
Specification	Han K 6/36 Pos. M Insert Crimp
HARTING eCatalogue	https://harting.com/09380423001

Identification

Category	Inserts
Series	Han-Com®
Identification	Han® K 6/36

Version

Termination method	Crimp termination
Gender	Male
Size	16 B
Number of contacts	42
Number of signal contacts	36
Number of power contacts	6
PE contact	Yes
Details	Please order crimp contacts separately.

Technical characteristics

Conductor cross-section	1.5 ... 6 mm ² Power 0.14 ... 2.5 mm ² Signal
Wire outer diameter	≤5 mm
Rated current	40 A
Rated voltage	690 V
Rated impulse voltage	8 kV
Pollution degree	3
Rated current (signal)	10 A



Pushing Performance
Since 1945

Technical characteristics

Rated voltage (signal)	160 V
Rated impulse voltage (signal)	2.5 kV
Pollution degree (signal)	3
Rated current acc. to UL	40 A
Rated voltage acc. to UL	600 V
Rated current acc. to UL (signal)	10 A
Rated voltage acc. to UL (signal)	600 V
Rated current acc. to CSA	40 A
Rated voltage acc. to CSA	300 V
Rated current acc. to CSA (signal)	10 A
Rated voltage acc. to CSA (signal)	300 V
Insulation resistance	$>10^{10} \Omega$
Tightening torque	1.2 Nm PE screw M4
Recommended screw driver	Slotted 0.8 x 4.5 PH2
Limiting temperature	-40 ... +125 °C
Mating cycles	≥ 500

Material properties

Material (insert)	Polycarbonate (PC)
Colour (insert)	RAL 7032 (pebble grey)
Material flammability class acc. to UL 94	V-0
RoHS	compliant
ELV status	compliant
China RoHS	e
REACH Annex XVII substances	Not contained
REACH ANNEX XIV substances	Not contained
REACH SVHC substances	Not contained
California Proposition 65 substances	Not contained
Fire protection on railway vehicles	EN 45545-2 (2020-08)
Requirement set with Hazard Levels	R22 (HL 1-3) R23 (HL 1-3)



Pushing Performance
Since 1945

Specifications and approvals

Specifications	IEC 60664-1 IEC 61984
UL / CSA	UL 1977 ECBT2.E235076 CSA-C22.2 No. 182.3 ECBT8.E235076
Approvals	DNV GL

Commercial data

Packaging size	1
Net weight	61 g
Country of origin	Romania
European customs tariff number	85366990
GTIN	5713140056510
eCl@ss	27440205 Contact insert for industrial connectors
ETIM	EC000438
UNSPSC 24.0	39121522